

# D46

## Bronze Globe Valve

D46

PN40

### Features & Benefits

- Crane bronze globe valves are highly efficient for throttling because seat and disc designs provide flow characteristics with proportionate relationships between valve lift and flow rate

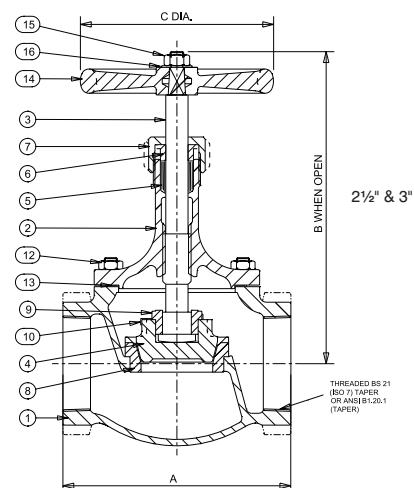
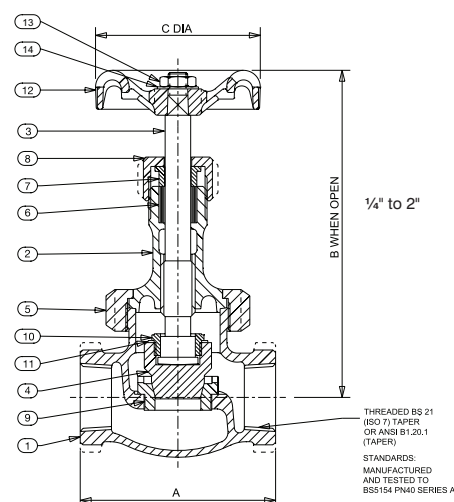
### Materials

| NO. | PART            | MATERIAL                               | SIZES     |
|-----|-----------------|--|-----------|
| 1   | Body            | Bronze BS EN 1982 CC491K               | All       |
| 2   | Bonnet          | Bronze BS EN 1982 CC491K               | All       |
| 3   | Stem            | Brass BS EN 12163 CW721R               | 1/4 - 2   |
| 4   | Disc            | Duplex Stainless Steel S32205          | All       |
| 5   | Union Ring      | Bronze BS EN 1982 CC491K               | 1/4 - 2   |
| 6   | Packing         | Asbestos Free                          | All       |
| 7   | Gland           | Brass BS EN 12164 CW614N               | All       |
| 8   | Packing Nut     | Brass BS EN 12164 CW614N               | 1/4 - 2   |
| 8   | Packing Nut     | Bronze BS EN 1982 CC491K               | 2 - 3     |
| 9   | Body Seat Ring  | 13% Cr.Steel BS 970 Pt.1 410S21/431S29 | All       |
| 10  | Disc Stem Ring  | Brass BS EN 12164 CW721R               | 1/4 - 2   |
| 11  | Lockwasher      | Brass BS EN 1652 CuZn 40Pb             | All       |
| 12  | Bonnet Stud     | Steel BS 970 070M20                    | 2 1/2 & 3 |
| 13  | Bonnet Stud Nut | Steel BS 4190 Gr.4                     | 2 1/2 & 3 |
| 14  | Gasket          | Asbestos Free                          | 2 1/2 & 3 |
| 15  | Handwheel       | Aluminium                              | 1/4 - 2   |
| 16  | Handwheel Nut   | Brass BS EN 12164 CW614N               | All       |
| 17  | ID Plate        | Aluminium                              | All       |



GENERAL VALVES

### Dimensional Drawing



### Dimensions & Weights

| SIZE (inch) | WEIGHT (kg) | A (mm) | B (mm) | C (mm) |
|-------------|-------------|--------|--------|--------|
| 1/4         | 0.53        | 59     | 122    | 52     |
| 3/8         | 0.55        | 59     | 122    | 52     |
| 1/2         | 0.8         | 68     | 140    | 65     |
| 3/4         | 1.24        | 81     | 152    | 70     |
| 1           | 1.82        | 95     | 171    | 78     |
| 1 1/4       | 2.73        | 108    | 193    | 92     |
| 1 1/2       | 3.78        | 121    | 220    | 103    |
| 2           | 6.03        | 146    | 251    | 121    |

**PRESSURE RATING:** PN40

**TEMPERATURE OPERATING RANGE:** -10 to 260°C

**UK END CONNECTION:** BS 21 Taper

**US END CONNECTION:** ANSI B1.20.1

**OPERATOR:** Handwheel

**AVAILABLE OPTOINS:** P150 Locking Device

**SPECIFICATION:** Valves are manufactured in accordance with BS 5154 PN40 for series A ratings.

Design incorporates Duplex Stainless Steel S32205 plug type disc retained on stem by a threaded ring. The body seat is screwed-in stainless steel ring. Sizes 1/4" to 2" have a union bonnet and sizes 2 1/2" and 3" have a bolted bonnet.

This valve is not suitable for use on group 1 gases or unstable fluids, as defined by the Pressure Equipment Directive 2014/68/EU.\*

Valves having ANSI threads also generally conform to MSS SP-80.

\* See page 159 for more information

Valid as of 081220

Every effort has been made to ensure that the information contained in this publication is accurate at the time of publishing. Crane Ltd assumes no responsibility or liability for typographical errors or omissions or for any misinterpretation of the information within the publication and reserves the right to change without notice.