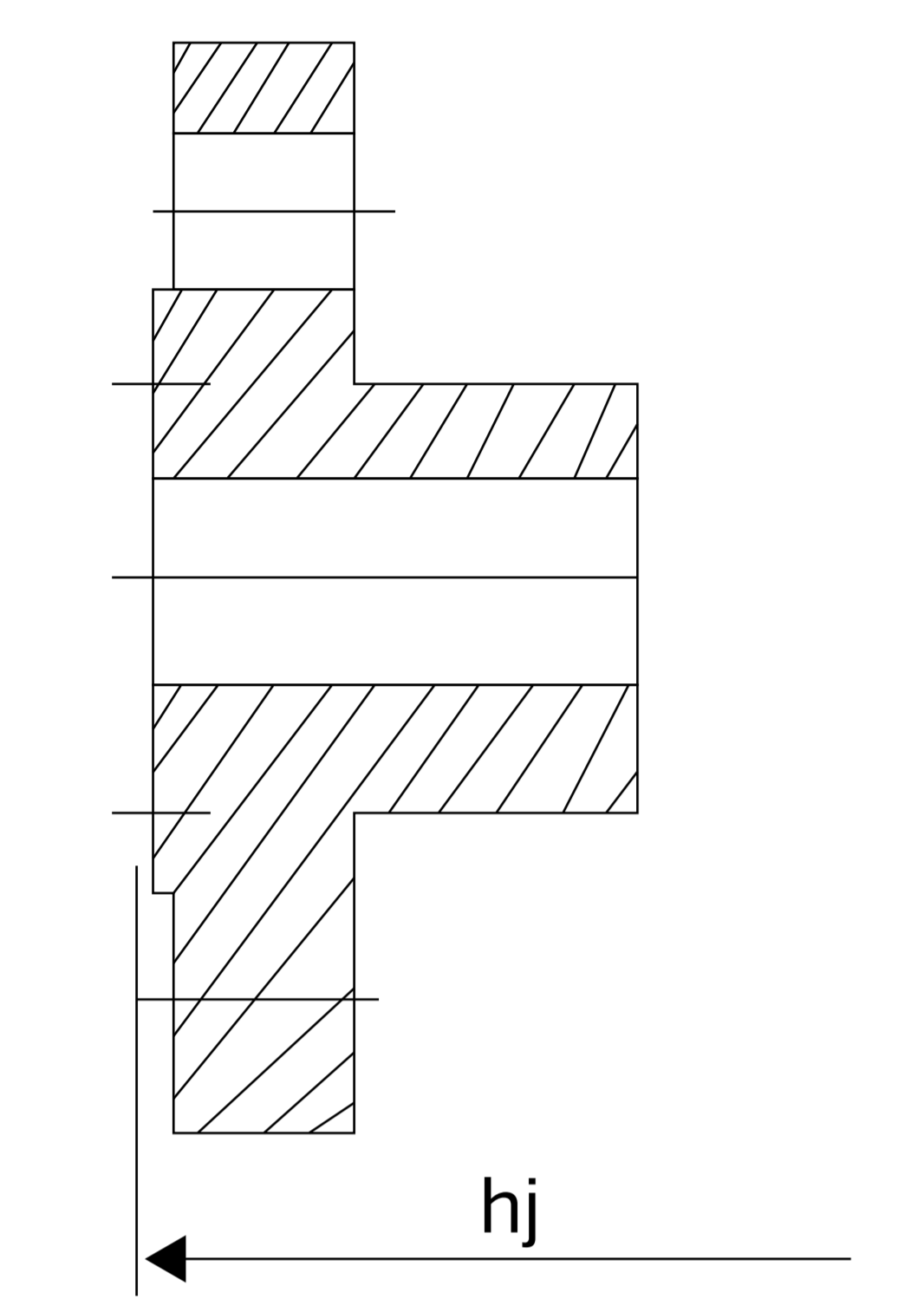
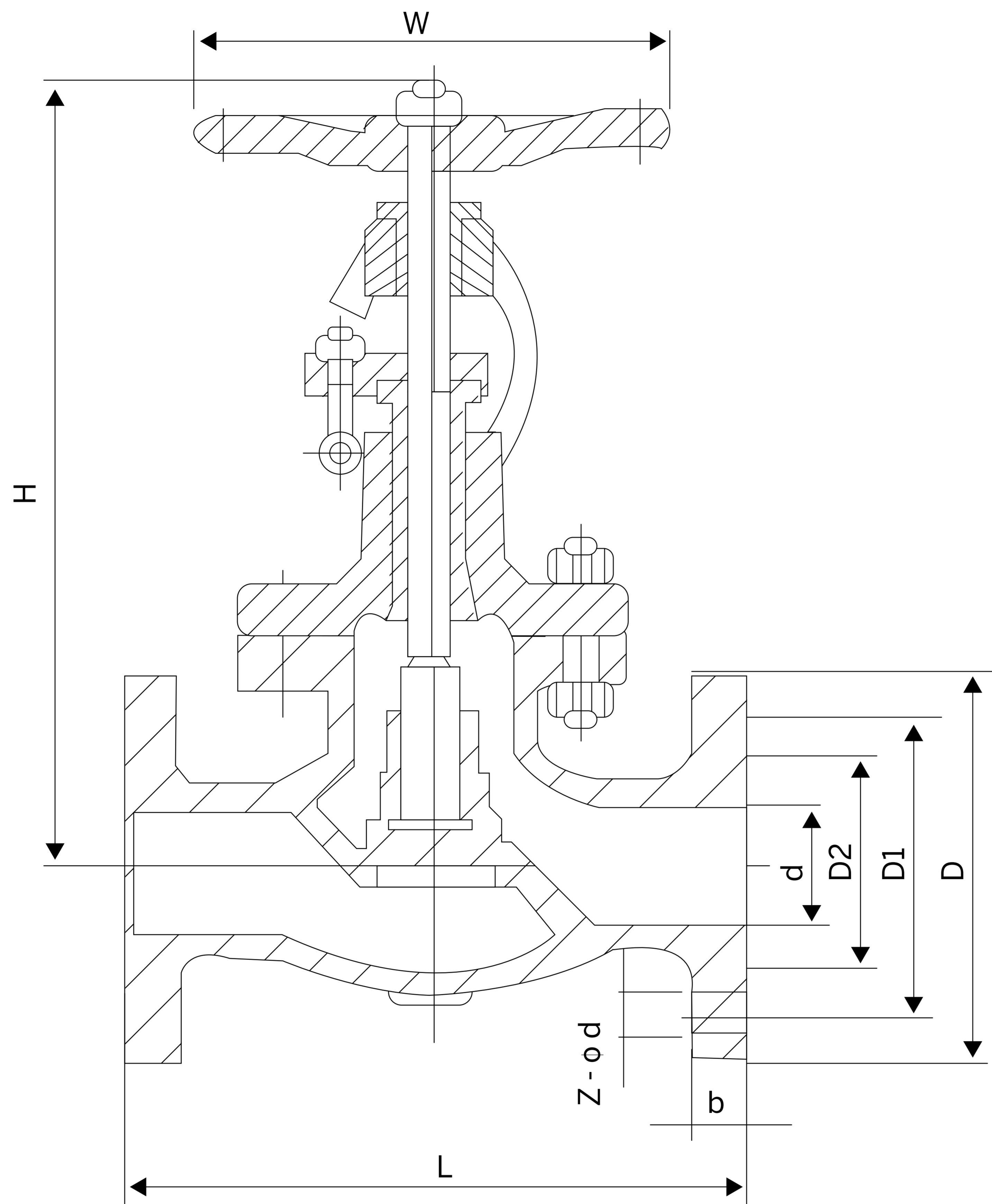
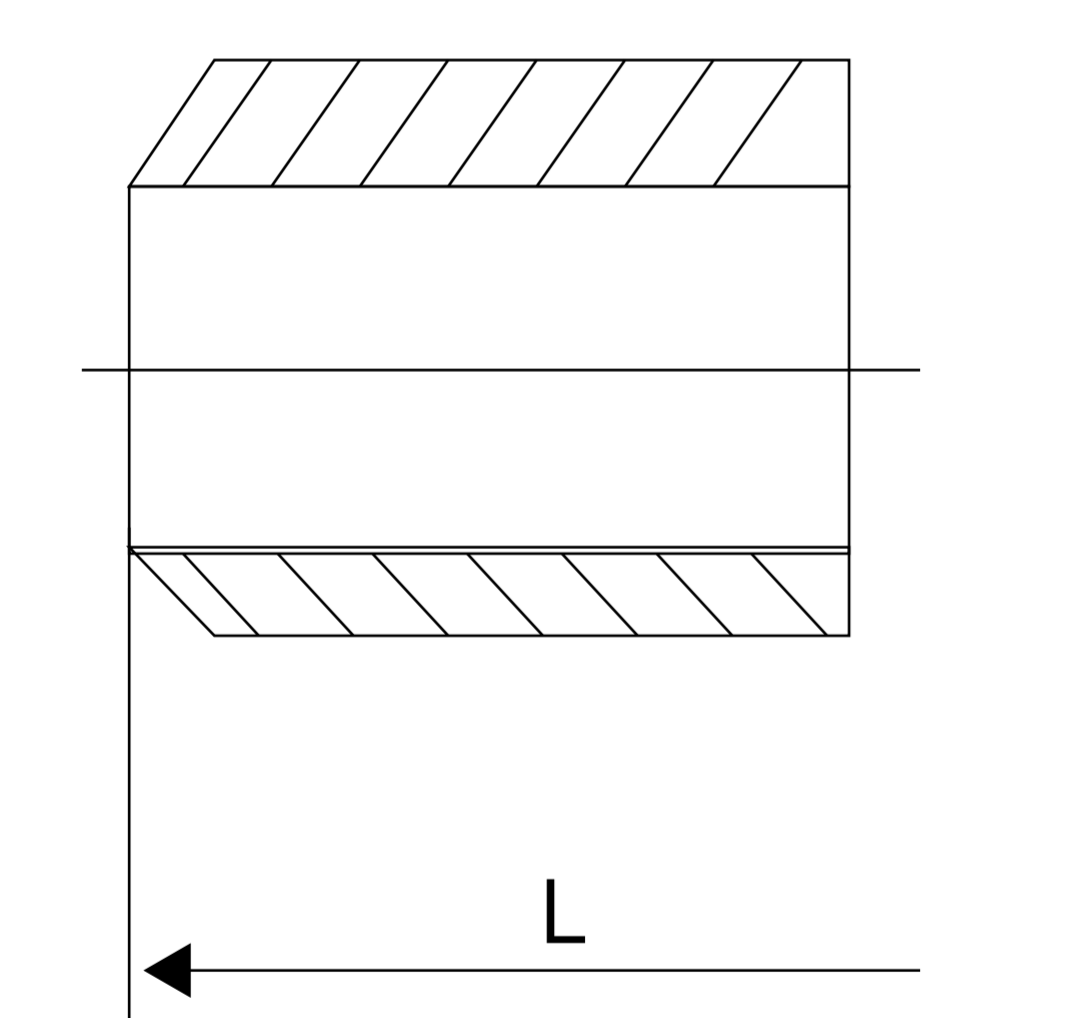


CAST STEEL GLOBE VALVE CLASS 300



Ring Type Joint End



Butt Welding End

PART MATERIAL

Shell	ASTM A216						ASTM A351 - CF8				
Cap	F6a		F304		F316		Monel	F304			
Seat	13Cr	13Cr	STL	304	STL	316	STL	Monel	304	304	STL
Disc Facing	13Cr	STL	STL	304	STL	316	STL	Monel	304	STL	STL

Shell	ASTM A351 - CF3			ASTM A216 - WCB			ASTM A 351 - CF3M		
Cap	F304L			F316L			F316L		
Seat	304L	304L	STL	316	316	STL	316L	316L	STL
Disc Facing	304L	STL	STL	316	STL	STL	316L	STL	STL

FEATURES

- BB OS & Y Structure
- Flange or Butt-Welding End
- Manufacture In Accordance with BS 1873
- Flange Dimensions To ANSI B16.5
- Butt-Welding End Dimensions To ANSI B16.1
- Valve Tested To API 6D or API 598

DIMENSION

Size	DN	d	L	Lj	D	D1	D2	b	Z-Od	W	Open	Wt(Kg)
1/2"	15	15	140	164	95	67	35	15	4-15	100	162	3.7
3/4"	20	20	152	191	117	83	43	16	4-19	120	168	5.3
1"	25	25	165	216	124	89	51	18	4-19	125	194	7.3
1 1/2"	40	40	190	241	156	115	73	21	4-22	168	235	15.4
2"	50	50	216	283	165	127	92	23	8-19	200	387	26
2 1/2"	65	65	241	308	190	149	105	26	8-22	200	419	40
3"	80	80	283	333	210	169	127	29	8-22	280	438	50
4"	100	100	305	371	254	200	157	32	8-22	350	504	90
6"	150	150	403	460	318	270	216	37	8-22	400	660	160
8"	200	200	502	575	381	330	270	42	12-25	450	902	290

WWW.VANECO.COM.PE

Email: ventas@vaneco.com.pe

Oficina: Av. Andrés Razuri 207 Urb. Maranga San Miguel

Almacén Principal: Avenida Nicolas Ayllón 2635 – Interior C3

Central telefónica: (511) 5170130  948544608